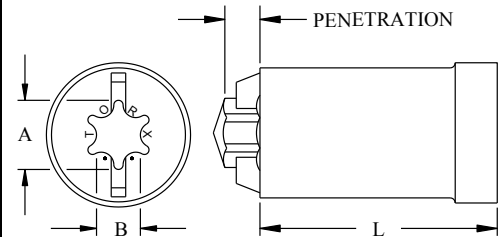


Combination / Slotted Punch Pin

Part Number	Drive Size	A inch/mm	B inch/mm	Length inch/mm	Penetration inch/mm
7TXI-277	7	.082/2.08	.060/1.52	.629/15.98	.030/.76
8TXI-277	8	.095/2.41	.069/1.75	.629/15.98	.040/1.02
9TXI-277	9	.102/2.59	.074/1.88	.629/15.98	.040/1.02
10TXI-277	10	.111/2.81	.081/2.05	.629/15.98	.045/1.14
15TXI-277	15	.132/3.35	.096/2.43	.629/15.98	.050/1.27
20TXI-277	20	.155/3.93	.112/2.85	.629/15.98	.060/1.52
25TXI-277	25	.178/4.53	.129/3.27	.632/16.05	.075/1.91
27TXI-277	27	.200/5.09	.144/3.67	.632/16.05	.080/2.03
30TXI-277	30	.221/5.62	.160/4.06	.632/16.05	.095/2.41
40TXI-277	40	.267/6.78	.192/4.89	.760/19.30	.110/2.79
45TXI-277	45	.313/7.95	.224/5.68	1.010/25.65	.140/3.56
50TXI-277	50	.353/8.96	.256/6.50	1.010/25.65	.175/4.45



1. Punch Pin materials:

- M2 at RC 61-64
- M42 at RC 63-65

2. Special penetrations available. Specify required penetration when ordering.

3. Oversize pins available for heavy plating applications.

4. PVD Coatings available for cold & hot heading applications.